

280 SOLAR PANEL

EXCEPTIONAL EFFICIENCY AND PERFORMANCE

BENEFITS

Highest Efficiency

Panel efficiency of 17.2% is higher than any commercially available competitor panel.

More Power

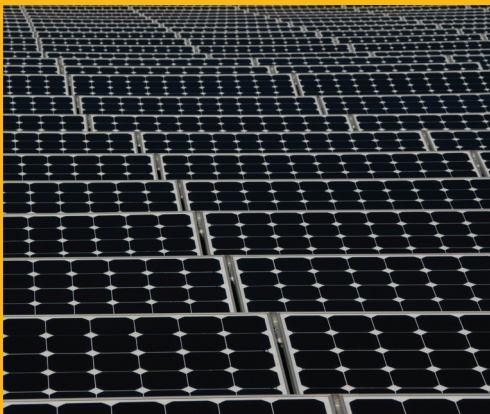
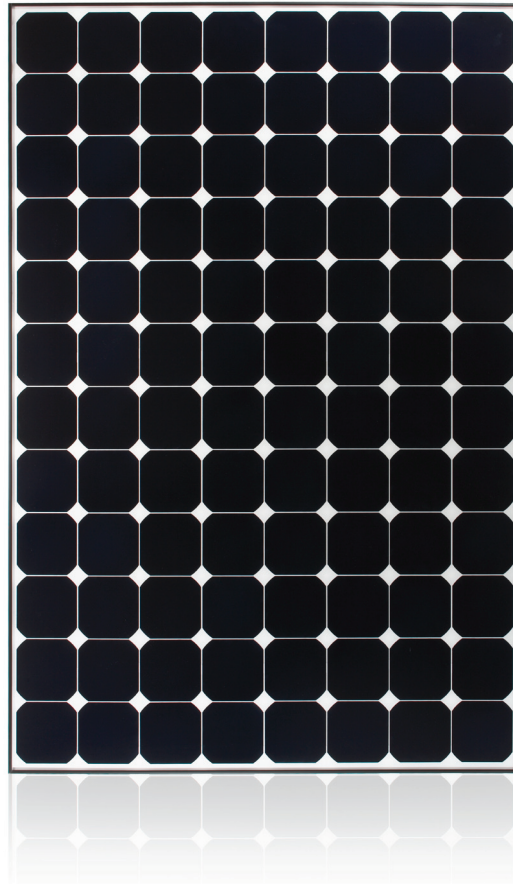
SunPower 280 delivers 50% more power per unit area than conventional solar panels and 100% more than thin film solar panels.

Reduces Installation Cost

More power per panel means fewer panels per install. This saves both time and money.

Reliable and Robust Design

Proven materials, tempered front glass, and a sturdy anodized frame allow panel to operate reliably in multiple mounting configurations.



The SunPower® 280 Solar Panel provides today's highest efficiency and performance. Utilizing 96 SunPower all back-contact solar cells, the SunPower 280 delivers an unprecedented total panel conversion efficiency of 17.2%. The 280 panel's reduced voltage-temperature coefficient and exceptional low-light performance attributes provide outstanding energy delivery per peak power watt.

SunPower's High Efficiency Advantage - Up to Twice the Power

Comparable systems covering 1000 m ² / 10,750 ft ²			
	Thin Film	Conventional	SunPower
Watts / Panel	65	165	280
Efficiency	9.0%	12.0%	17.2%
kWs	90	120	172

280 SOLAR PANEL

EXCEPTIONAL EFFICIENCY AND PERFORMANCE

Electrical Data

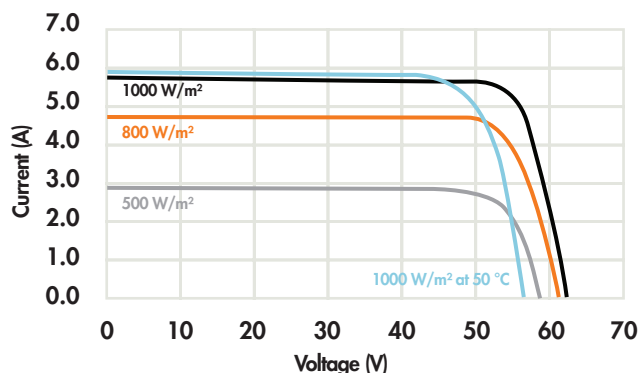
Measured at Standard Test Conditions (STC): irradiance of 1000 W/m², air mass 1.5 g, and cell temperature 25° C

Peak Power (+/-3%)	Pmax	280 W
Rated Voltage	Vmp	51.9 V
Rated Current	Imp	5.43 A
Open Circuit Voltage	Voc	60.90 V
Short Circuit Current	Isc	5.82 A
Maximum System Voltage	IEC	1000 V
Temperature Coefficients		
	Power	-0.38% / °C
	Voltage (Voc)	-182.4 mV/°C
	Current (Isc)	3.5 mA/°C
Series Fuse Rating		15 A
Peak Power per Unit Area		172 W/m ²

Mechanical Data

Solar Cells	96 SunPower all back-contact monocrystalline
Front Glass	high transmission tempered glass
Junction Box	IP-65 rated with 3 bypass diodes
Output Cables	1000 mm length cables / Multi-Contact connectors
Frame	Anodized aluminum alloy type 6063
Weight	24 kg, 53 lbs

IV Curve



Current/voltage characteristics with dependence on irradiance and module temperature.

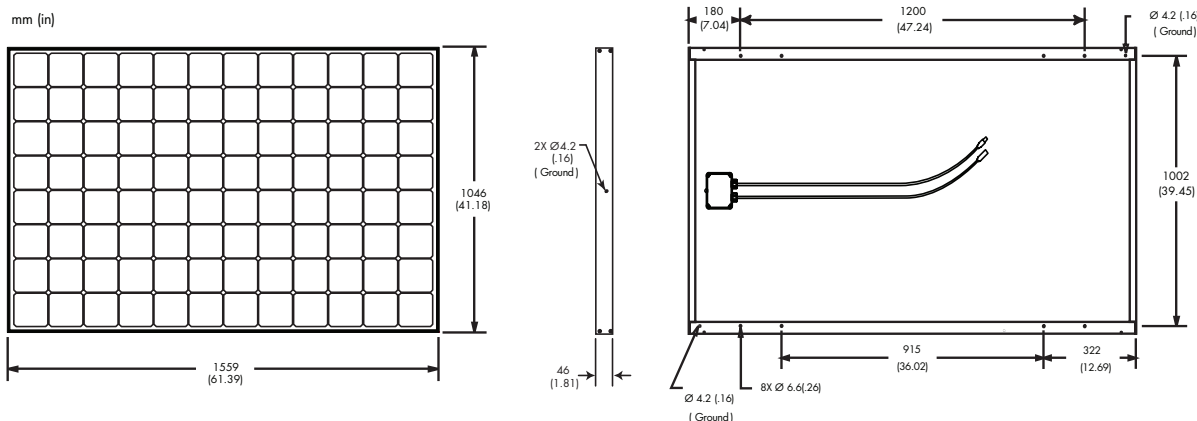
Tested Operating Conditions

Temperature	-40° C to +85° C (-40° F to +185° F)
Max load	240 kg/m ² (2400 Pascals) front and back
Impact Resistance	Hail - 25mm (1 in) at 23 m/s (52 mph)

Warranty and Certifications

Warranty	25 year limited power warranty
	10 year limited product warranty
Certifications	IEC 61215 Ed. 2, Safety tested IEC 61730 (SKII)

Dimensions



CAUTION: READ SAFETY AND INSTALLATION INSTRUCTIONS BEFORE USING THE PRODUCT. Go to sunpowercorp.com for details

About SunPower®

SunPower designs, manufactures and delivers high-performance solar electric technology worldwide. Our high-efficiency solar cells generate up to 50 percent more power than conventional solar cells. Our high-performance solar panels, roof tiles and trackers deliver significantly more energy than competing systems.

Document #001-50727 Rev**